



**Jay County  
REMC**

A Touchstone Energy® Cooperative 

**484 S 200 W  
P.O. Box 904, Portland, IN 47371**

**PHONE NUMBERS & HOURS**

Local ..... (260) 726-7121  
Toll Free ..... (800) 835-7362  
Fax ..... (260) 726-6240  
E-mail ..... remc@JayREMC.com  
Web Site ..... www.JayREMC.com

**To report an outage or emergency**

Call (260) 726-7121 or  
(800) TEL-REMC (835-7362)

**24 hours a day, 7 days a week**

Be ready to provide the following information:

1. Name under which the electric service is listed.
2. Map location number.
3. Your phone number in case we need to call you back.
4. The type of problem you are experiencing, e.g., flickering lights, complete power outage, etc.
5. Hang up when all information has been recorded — other members may be trying to contact the REMC, too.

**Office hours: 8 a.m.-4:30 p.m.  
Monday-Friday**

**CO-OP NOTES**

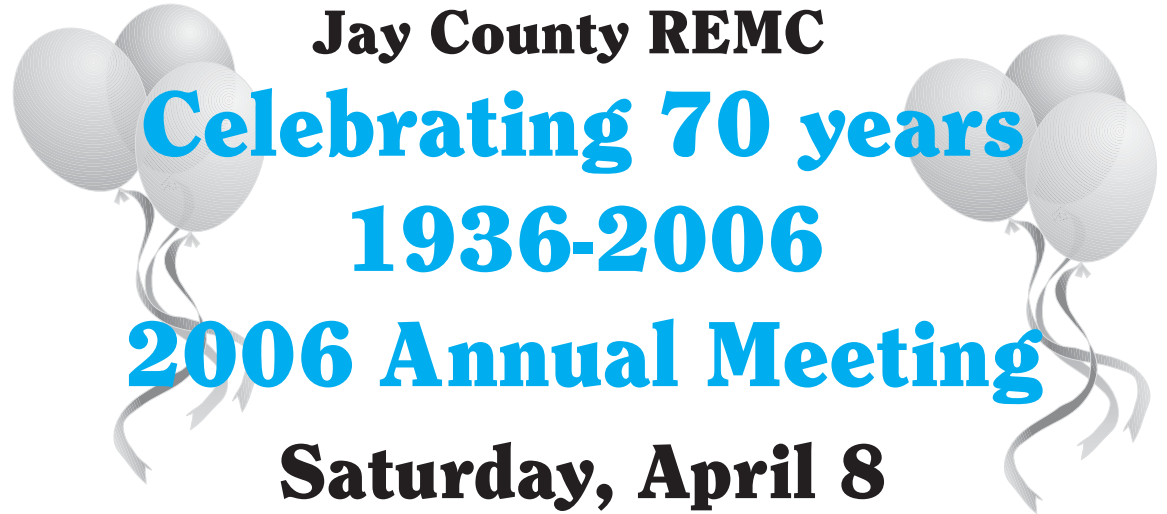
**\$50 cash drawing winner**

The \$50 drawing winner for the month of February was Harvey Thornton of Portland. Read **Electric Consumer** for your chance to win \$50.

**Et Cetera Ecke gift certificate**

Orla Kuhn of Bryant won the Et Cetera Ecke gift certificate which was publicized in the February issue of **Electric Consumer**.

**co-opNews**



**Jay County REMC  
Celebrating 70 years  
1936-2006**

**2006 Annual Meeting**

**Saturday, April 8**

**Jay County High School Auditorium  
Highway 67, Portland, next to the REMC**

- 6-7 p.m. Registration
- 6 p.m. to end of program Kids' program in the commons and gym with games and food, chaperoned by Boy Scout Troop 202
- 6 p.m. Member Business Expo
- 6:15 p.m. Entertainment: Stateline Singers, Eastern Breeze Flute Choir, and Distant Thunder Percussion Ensemble
- 7 p.m. Business meeting  
Board reports  
Attendance gifts: \$10 bill credit, light bulb and wall plate  
**Grand door prize: Three night Caribbean cruise**



APRIL						
S	M	T	W	T	F	S
						1
2	3	4	5	6	7	8
9	10	11	12	13	14	15
16	17	18	19	20	21	22
23	24	25	26	27	28	29
30						



# The value of trees

Celebrate Arbor Day on April 28 by planting a tree ... away from power lines. Arbor Day started in 1872 by J. Sterling Morton to encourage planting trees in Nebraska. Over one million trees were planted on the first Arbor Day. The reasons to plant trees are the same as 130 plus years ago. Here are some statistics on just how important trees are in a community setting.

- The net cooling effect of a young, healthy tree is equivalent to 10 room-size air conditioners operating 20 hours a day.
- Trees can boost the market value of your home by an average of six or seven percent.
- Landscaping, especially with trees, can increase property values as much as 20 percent.
- One acre of forest absorbs six tons of carbon dioxide and puts out four tons of oxygen. This is enough to meet the annual needs of 18 people.
- There are about 60-200-million spaces along our city streets where trees could be planted. This translates to the potential to absorb 33 million more tons of carbon dioxide every year, and saving \$4 billion in energy costs.
- Trees properly placed around buildings

can reduce air conditioning needs by 30 percent and can save 20-50 percent in energy used for heating.

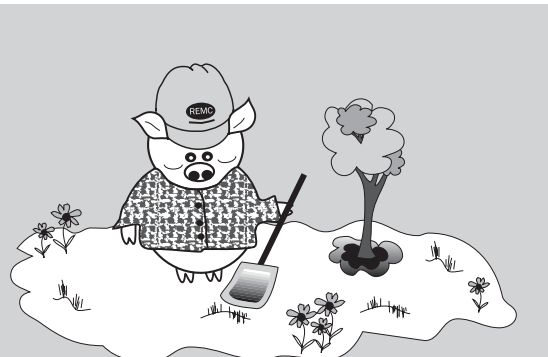
- Trees can be a stimulus to economic development, attracting new business and tourism. Commercial retail areas are more attractive to shoppers, apartments rent more quickly, tenants stay longer, and space in a wooded setting is more valuable to sell or rent.
- Shade from trees could save up to \$175 per year (per structure) in air conditioning costs.
- Healthy, mature trees add an average of 10 percent to a property's value.
- The planting of trees means improved water quality, resulting in less runoff and erosion. This allows more recharging of the ground water supply. Wooded areas help prevent the transport of sediment and chemicals into streams.
- In laboratory research, visual exposure to settings with trees has produced significant recovery from stress within five minutes, as indicated by changes in blood pressure and muscle tension.

*Information provided by the USDA, National Arbor Day Foundation and private sources.*

## Can you dig it?

Diggy Piggy says, "It's that time of the year when people begin poking all kinds of holes in the ground. New trees, shrubs, fence posts, mailboxes; you name it. All require digging a hole from a foot to several feet deep.

"The problem is that you don't really know what you are going to dig into. It may only be a few earthworms or the ring you lost last year. Or it could be a buried utility line, like 240 volts or 7,200 volts (if it's primary) of electricity. Now, wouldn't that put a kink in your tail? Or you may chop right into the lines just as the children settle down to watch 'Charlotte's Web.' All of which could be downright dangerous.



"So, call the Jay County REMC at (800) 835-7362 or Holey Moley at (800) 382-5544 before you start digging. Folks from the REMC help keep you safe and avoid the shocks by coming out and locating the underground lines. Then you can dig it."

## Spring storms bring safety hazards

Spring in Indiana often brings violent weather, including thunderstorms, tornadoes and flooding, which all create electrical hazards.

"The danger does not end when the storm does," said Molly Hall, executive director of Safe Electricity. "People can be hurt or killed by hazards left behind. It's wise to be cautious in any cleanup effort."

Stay away from downed power lines and be alert to the possibility that tree limbs or debris may hide an electrical hazard. Treat all downed or hanging power lines as if they are energized. Warn others to stay away and contact the electric utility.

If using electric yard tools in cleanup efforts,

do not operate them if it's raining or the ground is wet, or while you are wet or standing in water. Keep all electric tools and equipment at least 10 feet away from wet surfaces.

Before re-entering storm-damaged buildings or rooms, be sure all electric and gas services are turned off. Never attempt to turn off power at the breaker box if you must stand in water to do so. If you can't reach your breaker box safely, call your electric co-op to shut off power at the meter. Never step into a flooded basement or other area if water is covering electrical outlets, appliances or cords. Be alert to any electrical equipment that could be energized and in contact with water.

## Pruning primer

**Why does the Jay County REMC trim trees?**

- **SAFETY:** Power lines carry high voltages of electricity. These wires can be deadly. Only trained professionals should attempt to trim trees near power lines. By pruning trees we can help assure that our members do not climb into trees and accidentally make contact with the power lines.

- **ELECTRICAL RELIABILITY:** Trees and other vegetation are the cause of over 25 percent of all power outages. By pruning trees, cutting down trees, cutting rights-of-way and cutting vines of utility poles that might damage the power lines and poles we can improve your electric service, keep you tuned into your favorite TV show and make sure that the alarm wakes you up in the morning.

- **TREE HEALTH:** Trees are an important part of our environment. They shade our yards, act as homes to all sorts of birds and animals and are a beautiful and valuable part of our surroundings.

Tree pruning is necessary to "keep the lights on." At the same time Jay County REMC wants to keep your trees healthy for years to come. By using nationally recognized arboricultural pruning techniques we can prune your trees in the ways to assure they heal and continue to grow.

Proper arboricultural standards include:

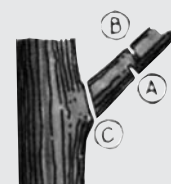
- Removing at the most one-third of a tree's crown.

- Making sure all the limbs are trimmed back to a lateral branch at least one-third the diameter of the removed limb.

If you have a tree that is in power lines, **do not try to trim the tree.** Call the Jay County REMC at (800) 835-7362 or (260) 726-7121 and we will trim the tree for you.

### How to make a pruning cut

**Large limbs:**



A: Make a partial cut from beneath.

B: Make a second cut from above several inches out and allow the limb to fall.

C: Complete the job with a final cut just outside the branch collar.

**Small branches:**

Make a sharp clean cut, just beyond a lateral bud or other branch.



**Correct cut**



**Too close**



**Too long**



**Too slanted**

## 2006 candidate profiles

The following individuals are running for a director seat on the Jay County REMC board.

### DISTRICT 1

**Harold Smith** has resided in Niles Township in Delaware County since 1962 with his wife, Peggy. Harold is retired from Jay County School Corporation after 25 years of teaching service.

He is also retired from farming and is a World War II veteran. Harold graduated from Dunkirk High School and holds a bachelor of science degree in Science and master of arts degree in chemistry and math from Ball State University.

He is a member of the Union Chapel Ministries of Muncie. He is a past master of the Masonic Lodge F&AM 175 of Dunkirk and past president of the Jay Classroom Teachers Association.

Harold and his wife have five children and 17 grandchildren.

Harold has been a board member for 23 years and is currently serves the board as the Wabash Valley Power Association director.



Harold Smith

### DISTRICT 3

**Richard Paxson** is a lifelong resident of Jay County. He is a graduate of Pennville High School and holds degrees from Purdue and Michigan State universities. He attended the graduate school of banking at the University of Wisconsin. Richard also served six years in the National Guard.

Richard taught agriculture for eight years in Maryland and Michigan. He has been in the financial industry for over 20 years. He is currently an investment representative for Edward Jones Investments in Montpelier.

He is a Kiwanian and member of the Montpelier Chamber of Commerce.

He and his family operate a 300 acre grain farm in Penn Township. The Paxsons are members of the Gilead Church in Balbec where Richard is a Sunday school teacher and board director. Richard and his wife, Betty, have three children: Matthew, Michael and Brenda, and seven grandchildren.

Richard has been on the board for 20 years and currently serves the board as a member of the finance committee.



Richard Paxson

### DISTRICT 5

**Michael Ninde** is a lifelong resident of Jay County.

He is a graduate of Bryant High School and holds a master's degree from Ball State University. He taught for 23 years in Adams and Jay County. His career with the school system was in the industrial arts and special education departments. Following his retirement from the school system, he has devoted all of his time to grain farming.

He is an active member of the Westchester United Methodist Church where he is a trustee. Mike is board of director for Habitat for Humanity.

He and his wife, Lana, have three children: Jim, Michele and Dan, and seven grandchildren.

Michael has been on the board for seven years and currently serves the board as a member of the finance committee.



Michael Ninde

### DISTRICT 7

**Tom Zimmerman** has been a resident of Jay County since 1950.

Tom is a graduate of Fort Recovery High School and a former member of the National Guard. He currently operates his own construction business, Tom's Building Service.

Tom and wife, Doris, attend the First Church of Christ in Fort Recovery. For the past 23 years, Tom has been a member of the Jay County Fair board and has served as president for the past 10 years.

He and his wife, Doris, are the parents of four daughters: Brenda, Lea Ann, Koresa, and Cindy, and five grandchildren.

Tom has been on the board for 11 years and currently serves as chairman of the board.



Tom Zimmerman

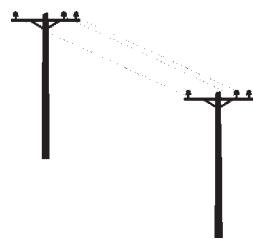
## SIDE LINES

**Courtesy of Portland Chamber**

**April 8: Great Lakes Native Americans, Lecture Series Session Three.** Learn more about Great Lakes Native Americans at 7 p.m. Free and open to the public at the Jay County Historical Society. Info: (765) 572-2574.

**Courtesy of Winchester Chamber**

**April 8: Three Sisters Artistry** presented by the Farmland Cultural



Center. Info: (765) 468-7631.

**April 15: Easter Egg Hunts.** For Winchester info: (765) 584-4916. For Saratoga info: (765) 584-0234. For Union City info: (765) 964-5492.

**April 22: Home and Garden Show at Randolph County Fairgrounds.** Info: Winchester Area Chamber of Commerce at (765) 584-3731.

**April 29: Winchester City Wide Garage Sale, at the 4-H grounds.** 7 a.m.-2 p.m. Info: (765) 584-4501.

**\$50 monthly drawing for bills dated April 20 and paid by April 28.**

NAME: \_\_\_\_\_

ACCOUNT NO.: \_\_\_\_\_

ADDRESS: \_\_\_\_\_

PHONE NO.: \_\_\_\_\_

Note: To be eligible for the drawing, your coupon and payment must be in the office by 4:30 p.m. on the last working day of the month.

## Tax benefits for energy efficiency

This time of year many of us are thinking of preparing our 2005 taxes. Now is also a good time to be planning for 2006 and 2007 taxes, too. What does this have to do with Jay County REMC? Our energy advisor program promotes the benefits of energy efficiency in your home or business. This year and next, you can take advantage of tax breaks for taking action to make your premises more energy efficient.

Energy efficiency tax credits are part of a massive 1,700 page national energy bill signed into law by President George W. Bush effective January 2006.

According to Cooperative.com, "the energy efficient tax credits will allow consumers to reduce their 2006 tax bills on a dollar-for-dollar basis up to the amount allowed under law. For example, consumers who purchase the most fuel efficient vehicles could reduce their tax liability by up to \$3,400, while those who install certain products such as energy efficient windows, insulation, doors, roofs and heating/cooling equipment in the home can receive up to \$500 off of their federal tax bills."

Breakouts of specific benefits for the home include:

- \$50 for purchasing an advanced main air circulating fan
- \$150 for installation of a highly efficient furnace or boiler
- \$200 for installing energy efficient windows
- \$300 for purchasing a highly efficient central air, heat pump or water heater
- Up to \$2,000 or 30 percent for the purchase of a solar water heating (pools and hot tubs exempt)

Businesses could benefit with credits for:

- 30 percent tax credit for solar equipment on a building
- Business tax credits for companies that build energy efficient homes
- Credits for the manufacture of energy-efficient appliances

We are not tax consultants or accountants and would urge you to consult one before making an investment. We can, however, help you with your planning for making your home more energy efficient and possibly qualifying for a tax credit.

For more detailed information about these tax credits, visit [www.ase.org/taxcredits](http://www.ase.org/taxcredits) or [www.energytaxincentives.org](http://www.energytaxincentives.org).

## Music warms homes

Music warms homes and hearts. That was the result of the recent Ken Bantz Benefit Performance held at Arts Place, which raised \$2,177 for supplemental energy assistance and \$600 for area food banks.

Ken Bantz's songs tell exceptional stories about family, relationships, life and about hardships people can face, such as the loss of a job or the difficult decisions one must face in figuring out how to make ends meet.

The benefit concert raised awareness for supplemental energy assistance as well as much-needed funds. Supplemental energy assistance programs provide additional funding for area residents in need to help pay utility bills. Bantz's awareness of recent cutbacks in federal funding and rising energy costs stimulated his interest in dedicating his performance as a benefit event. His enthusiasm was contagious.

A silent auction was also conducted to help raise money for area food banks. Kyle White of Brownstown Electric, the Gary Jones family, the Don Denney family, Ron Freeman of Pak-A-Sak, Jay County REMC, Joe Stutzman of Stoll and Stutzman, Tony Giltner, Angela Reinhart, Darlene Heare, American Red Cross, Ken Bantz, Briggs Hardware, Buffalo Bar and Grill, H. Steed Design, WZZY and Wal-Mart deserve a big round of applause for their generous donations to the auction.

Arby's, CVS, Domino's Pizza, Teresa Watters, Lacey Bonvillian, Tiffany Kunkle, Tammy Iliff and Sara Bedwell from Heads Up Studio and Subway kindly donated attendance prizes.

Thanks to all those who warmed our hearts by their assistance and generosity: Mark and Evelyn Arnold, Heidi Bouse, Sue Burk, Virgil Brackman, Don Cole, Don Denney, Miranda Denney, Abby Denney, Holly DuJardin, Christy Elmore, Brian Fravel, Shirley Gruss, Ron and Mary Laux, Kylea Lee, Tetia Lee, Vicki and Carter Leonard, Jason McGraw, John and Missy



Jay County REMC member Ken Bantz performs at the benefit concert for energy assistance programs.

May, Priscilla McFarland, Billy Paxson, Ron Myers, John and Martha Nill, Jennifer Nixon, Vicki Schuhmacher, Abby Schmiesing, Carla Sibery, Heather Steed, Laura Vogler, Wabash Valley Power Association, Beyond the Gilded Willow, Crossroads Financial Federal Credit Union, First Presbyterian Church, Jay County REMC and a special thank you to Ken Bantz. As for those extraordinary folks who purchased tickets for the concert thank you for helping to keep area residents warm this heating season.

The concert is over but the need continues. If you are interested in making a donation to Heartlite, People Helping People or other supplemental energy assistance programs please contact Community and Family Services at (260) 726-9318.

**As spring comes to the world,  
bringing sunshine and gladness...  
...this comes to you  
bringing wishes for joy.  
Happy Easter!**

**Jay County REMC  
will be closed  
April 14**

**In the event of an emergency  
please call  
(800) 835-7362**

